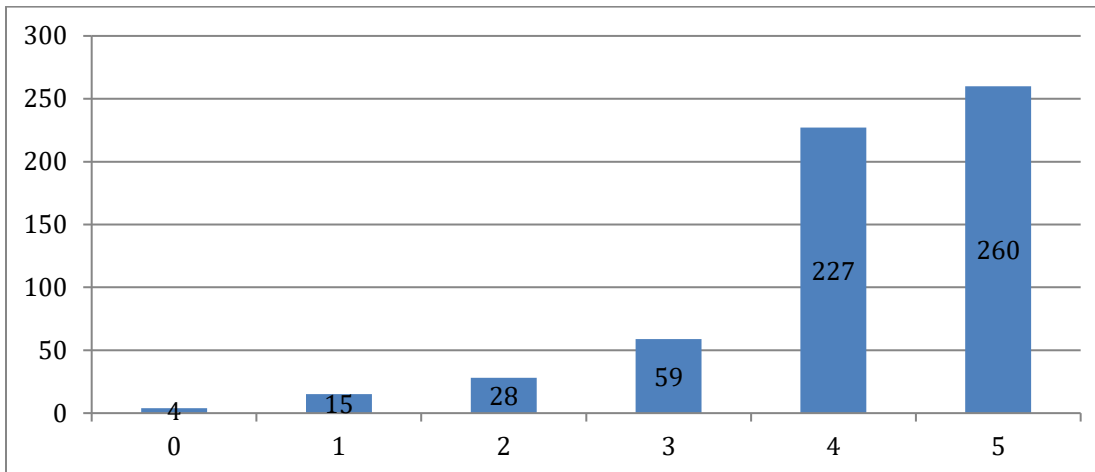


Report of Student Satisfaction Survey Conducted for Degree students of Sri Venkataramana Swamy College, Bantwal

Total Number of Responses: 587 responses

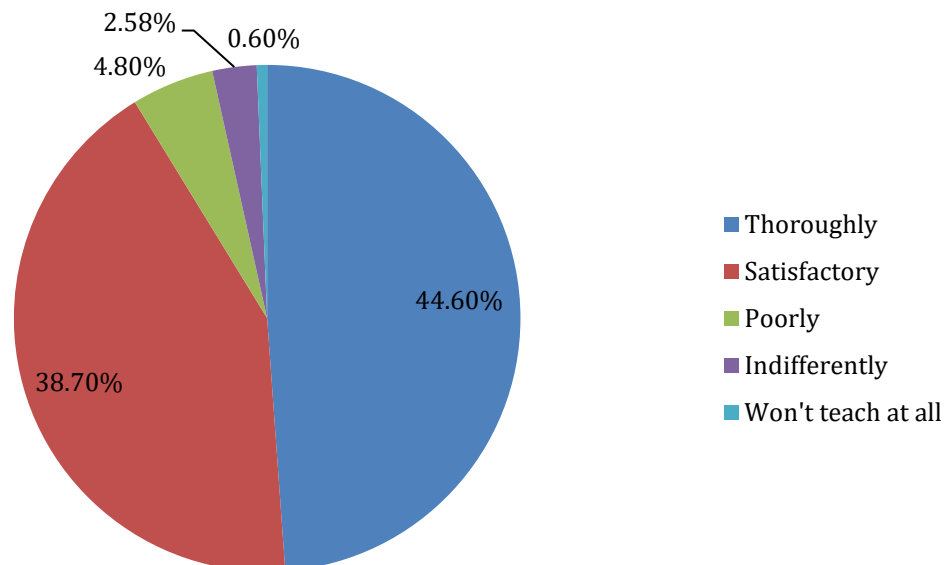
**1. How much of Syllabus was covered in the class?**

587 responses



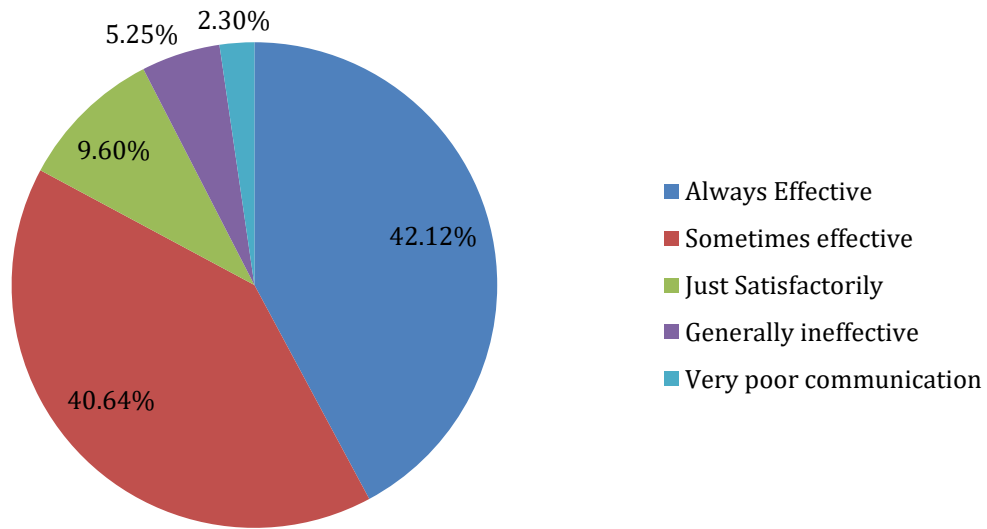
**2. How well did the teachers prepare for the classes?**

587 responses



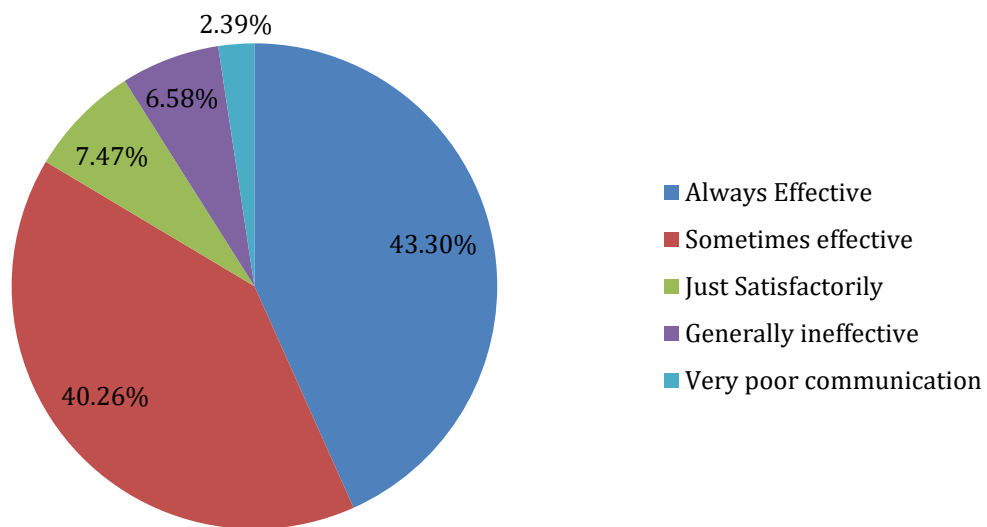
**3. How well did the teachers prepare for the classes?**

587 responses

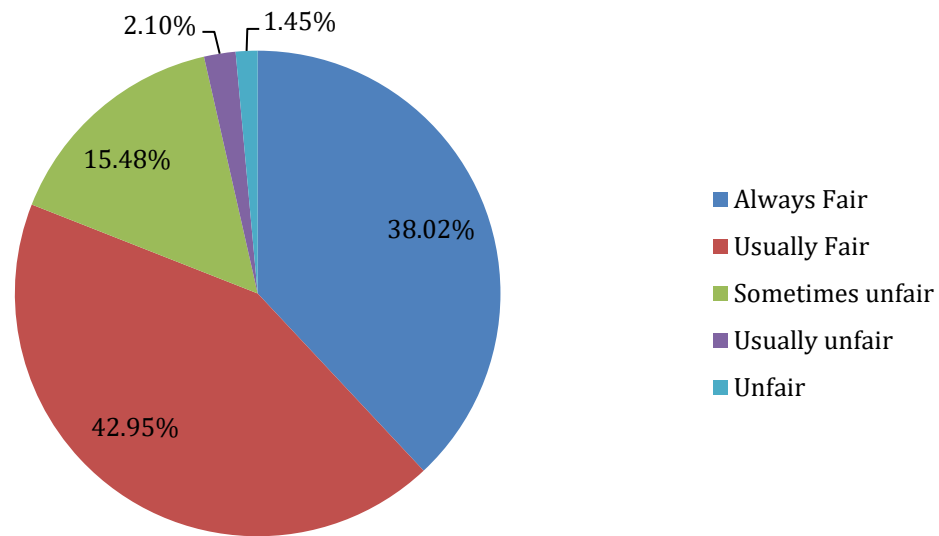


**4. The teacher's approach to teaching can best be described as**

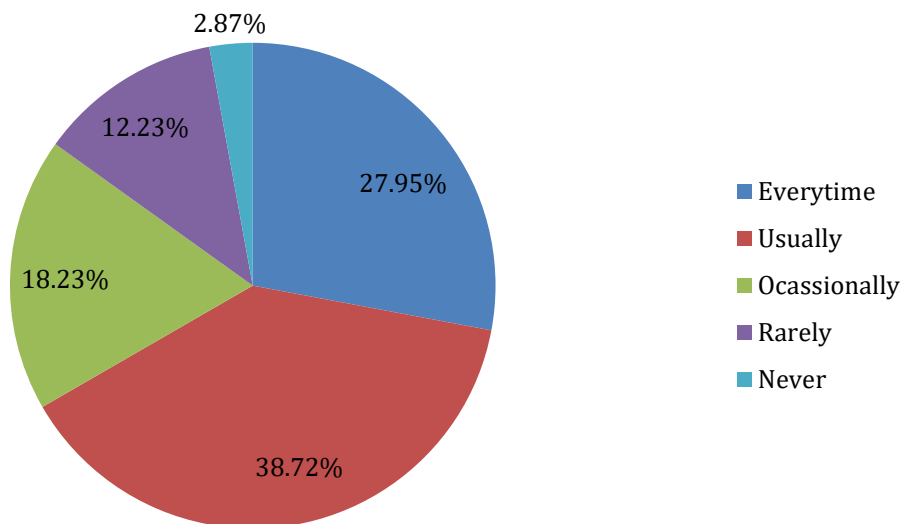
587 responses



**5. Fairness of the internal evaluation process by teachers**  
587 responses

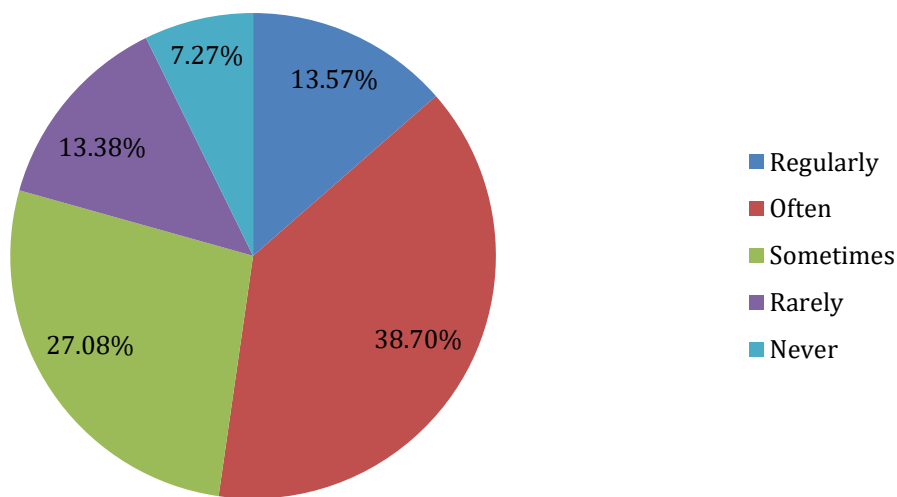


**6. Was your performance in assignment discussed with you?**  
587 responses



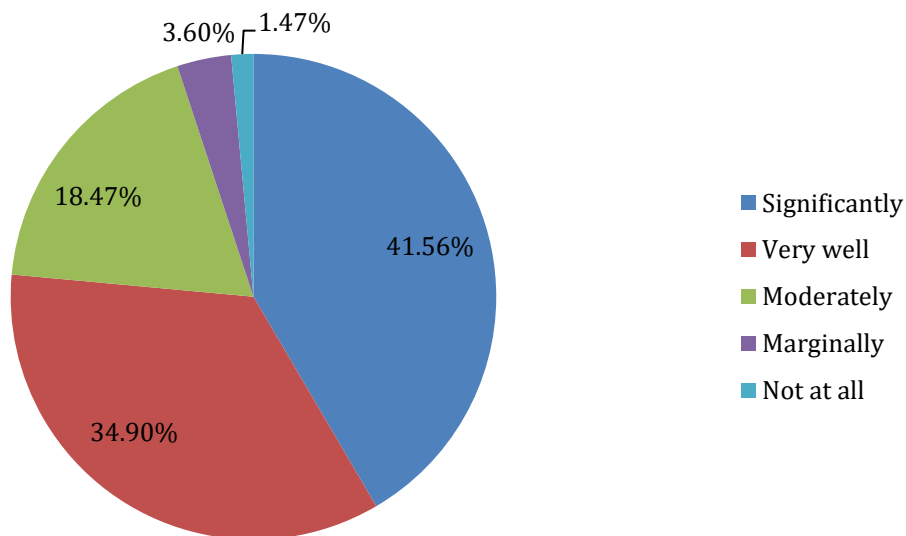
**7. The institution takes active interest in promoting internship, student exchange, field visit opportunities for students.**

587 responses



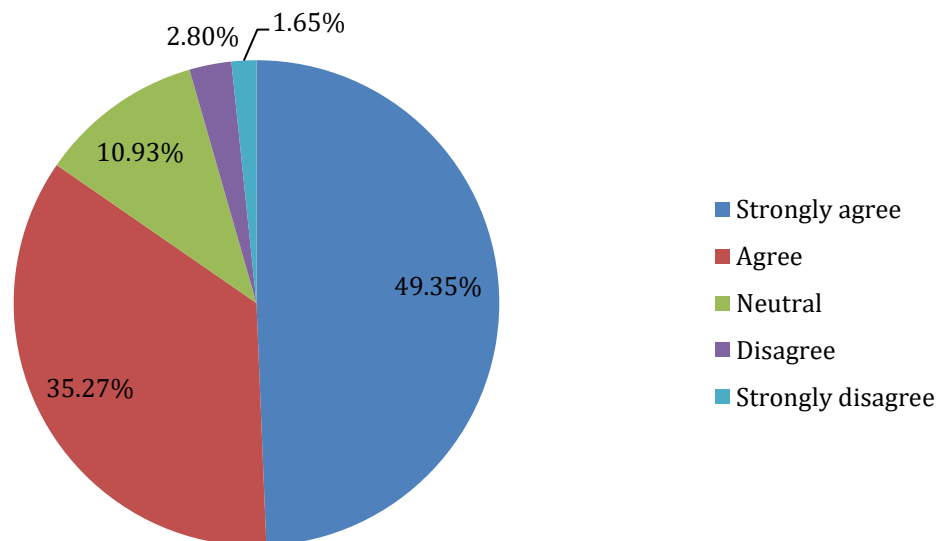
**8. The teaching and mentoring process in your institution facilitates you in cognitive, social and emotional growth.**

587 responses



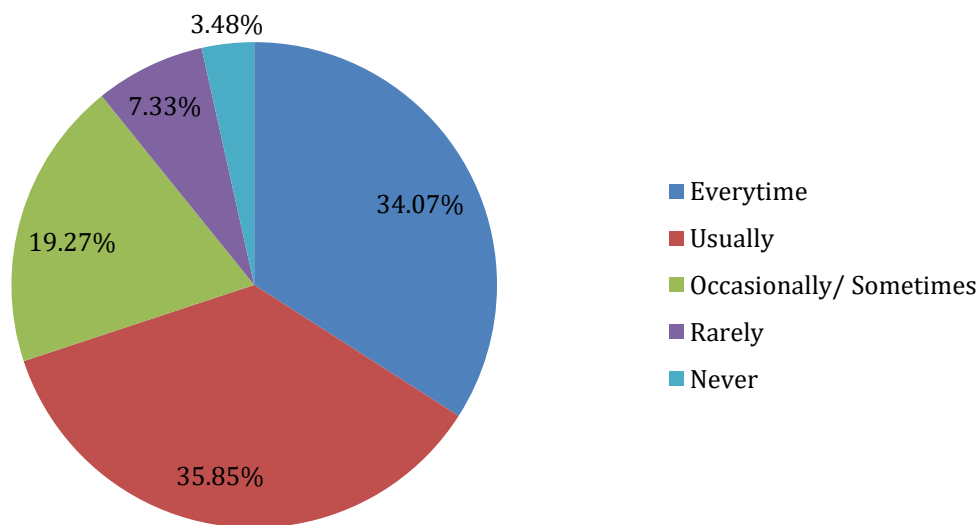
**9. The institution provides multiple opportunities to learn and grow.**

587 responses



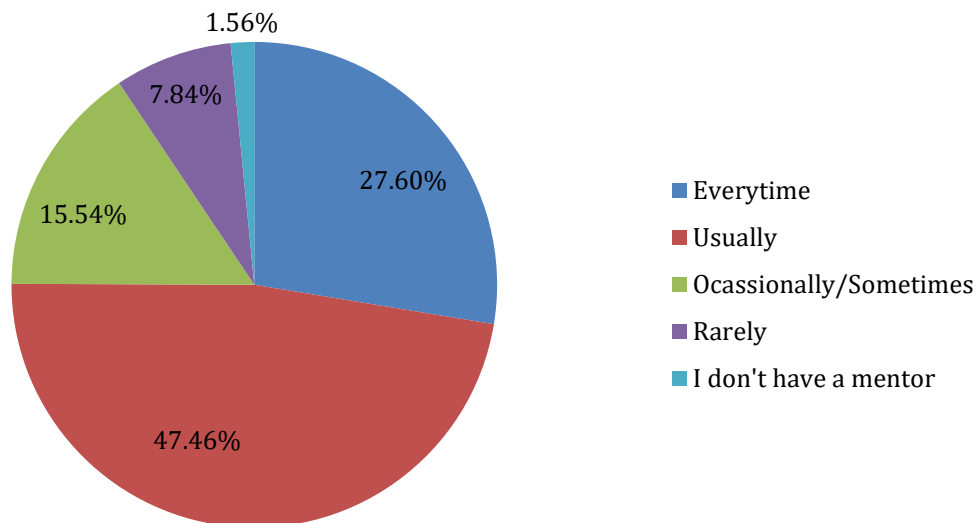
**10. Teachers inform you about your expected competencies, course outcomes and programme outcomes**

587 responses



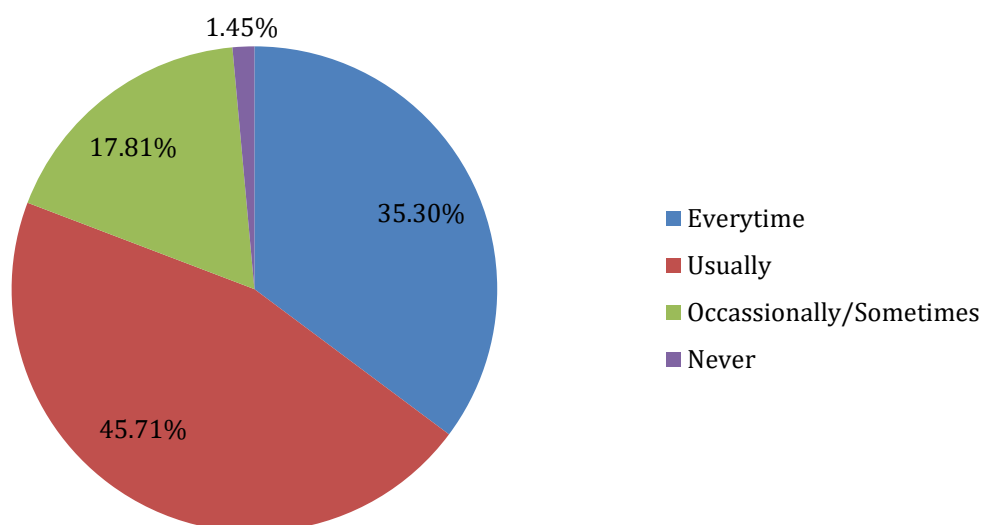
**11. Your mentor does a necessary follow-up with an assigned task to you.**

587 responses



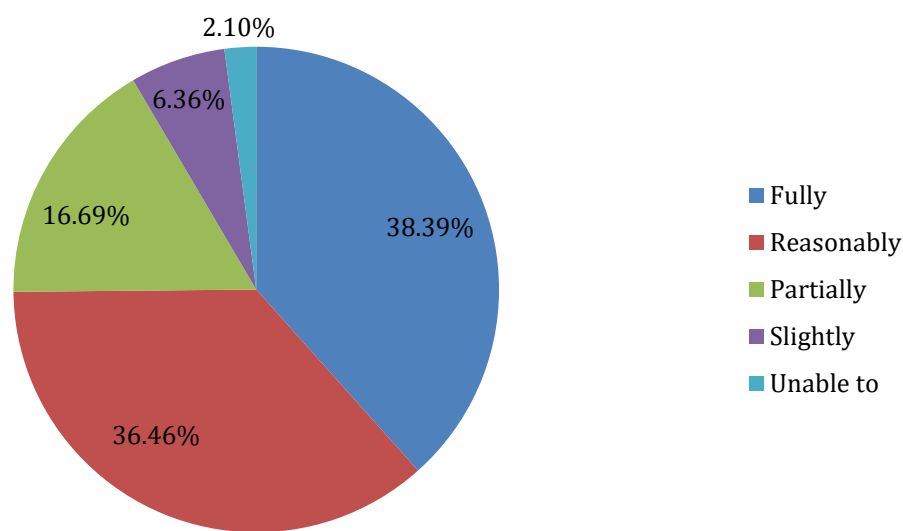
**12. The teachers illustrate the concepts through examples and applications.**

587 responses



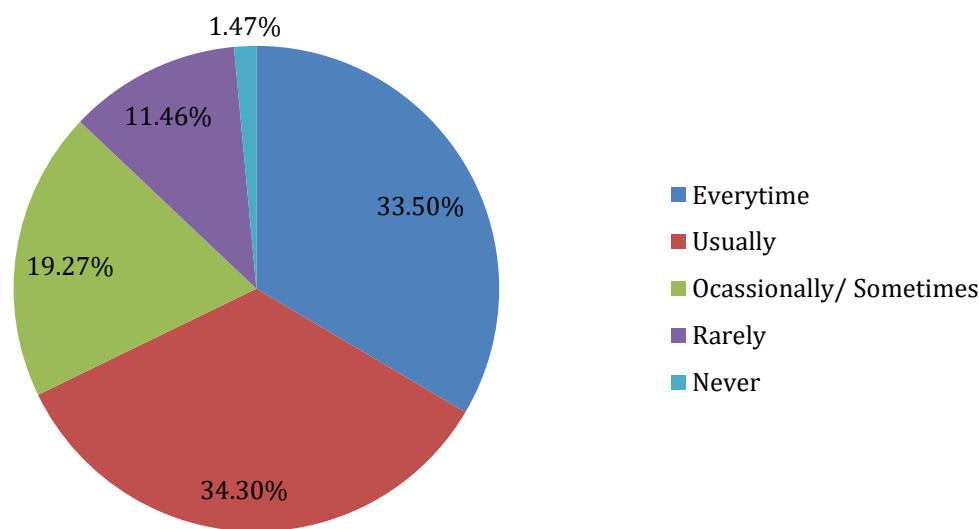
13. The teachers identify your strength and encourage you with providing right level of challenges.

587 responses



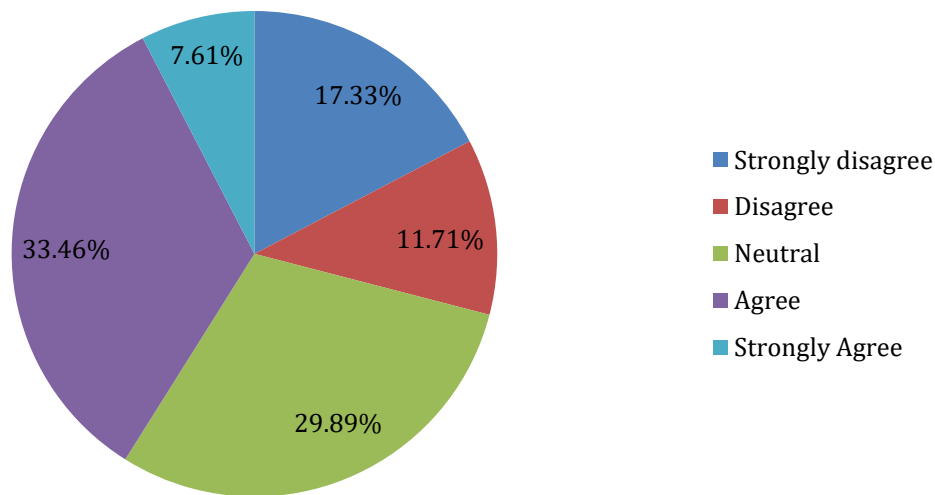
14. Teachers are able to identify your weakness and help you to overcome them.

587 responses



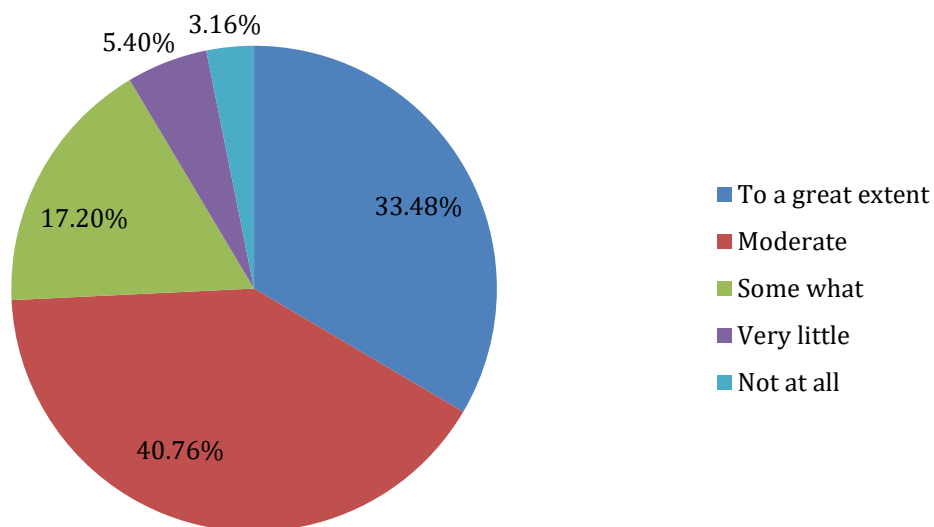
**15. The institution makes effort to engage students in the monitoring, review and continuous quality improvement of the teaching learning process**

587 responses



**16. The institute/ teachers use student centric methods, such as experimental learning, participative learning and problem solving methodologies for enhancing learning experiences.**

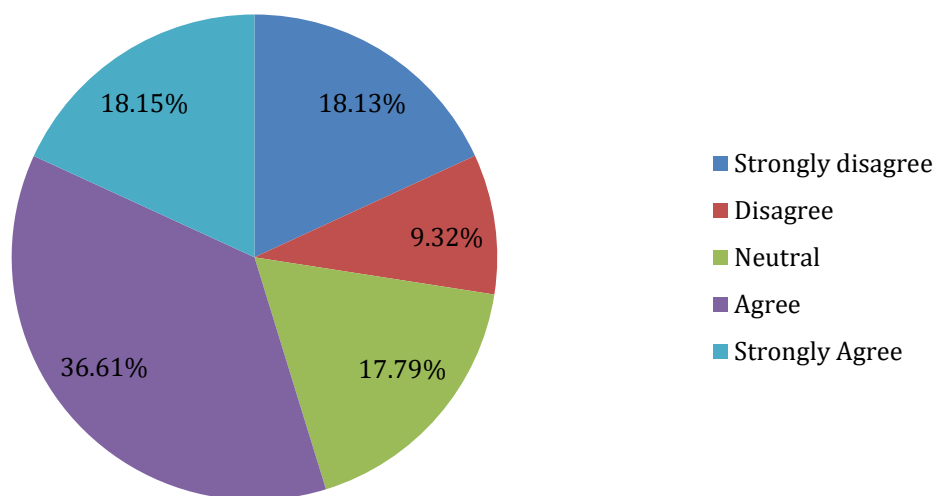
587 responses





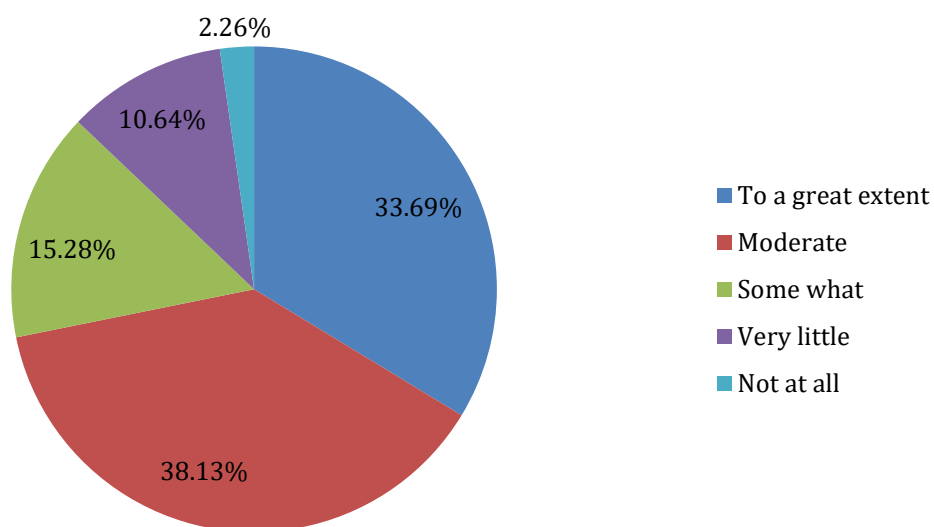
**17. Teachers encourage you to participate in extracurricular activities**

587 responses

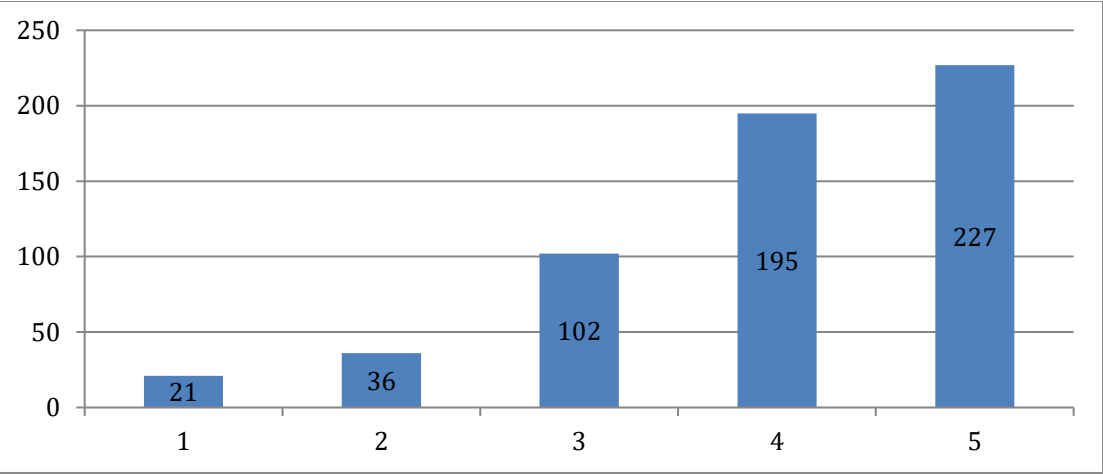


**18. Efforts are made by the institute/teachers to inculcate soft skills, life skills and employability skills to make you ready for the world of work.**

587 responses



19. What percentage of teachers use ICT tools such as LCD projector, Multimedia, etc. while teaching  
587 responses



20. The overall quality of teaching- learning process in your institute is very good.  
587 responses

